



LAWRENCE BERKELEY NATIONAL LABORATORY BIOEPIC BUILDING

PROJECT KICKOFF AND INFORMATIONAL SESSION

APRIL 14, 2021



Viki Bamba Chennault

Director, Small Business and Public Affairs,
Clark Construction

Email:

Marivic.Chennault@clarkconstruction.com

WELCOME AND OPENING REMARKS



Before We Begin...

- Please keep your microphones on mute.
- Please sign in.
- Please fill out the Google Form provided in the Chat Box to sign in.

https://docs.google.com/forms/d/e/1FAIpQLScTcF-iLtiDygUGnCAiM5N849ng9arrhk3x8GjQS47ZLMBU7Q/viewform?usp=pp_url

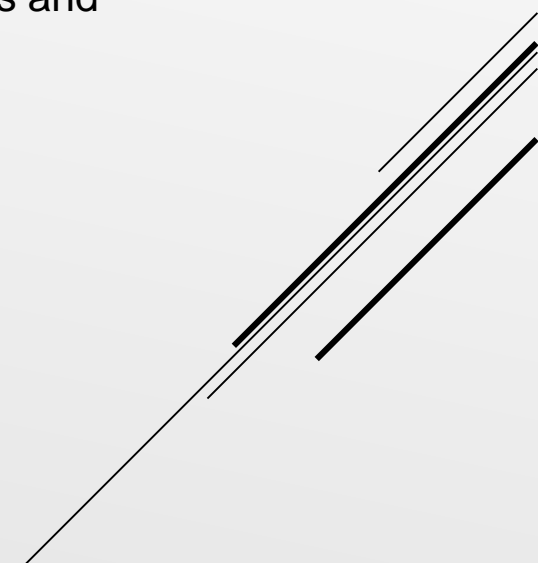
- This presentation will be posted on the project website after the meeting.

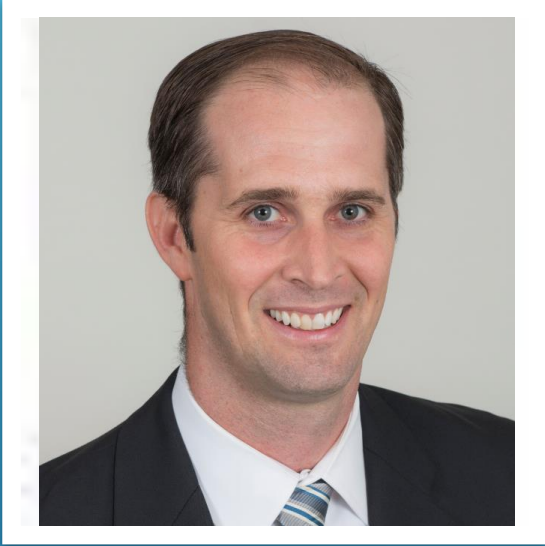
2:00pm Program Starts

- ❑ Welcome and Opening Remarks
 - Viki Bamba Chennault, Director of Small Business and Public Affairs, Clark
- ❑ Clark Construction and Project Overview
 - Howard Mosbacher, Project Executive, Clark
- ❑ Procurement and Scopes Overview
 - Oran McGee, Senior Project Manager, Clark
- ❑ LBNL Small Business Program and Goal
 - Phillip McCants, Acting Small Business Officer, Supervisor of Business Assurance and Policy, LBNL
- ❑ Small and Diverse Business Engagement Process and Resources
 - Viki Bamba Chennault, Director of Small Business and Public Affairs

2:30pm Q & A Session

AGENDA





Howard Mosbacher

Project Executive, Clark Construction

Email:

Howard.Mosbacher@clarkconstruction.com

COMPANY AND PROJECT OVERVIEW

Lawrence Berkeley National Laboratory BioEPIC Building Project Overview



Lawrence Berkeley National Laboratory BioEPIC Building Project Overview





Oran McGee

Senior Project Manager, Clark
Construction

Email:

Oran.McGee@clarkconstruction.com


PROCUREMENT AND SCOPES OVERVIEW

PROJECT PROCUREMENT OVERVIEW

Scopes of Work:

- EARTHWORK
- FIRE PROTECTION
- ROOFING AND WATERPROOFING
- DRYWALL
- CONCRETE
- METAL PANELS
- CURTAIN WALL
- VAPOR EMISSIONS SYSTEMS
- CMU
- RAILINGS
- FLASHING AND SHEET METAL
- STEEL DECKING
- MILLWORK
- FIREPROOFING
- INTERIOR GLAZING
- DOORS, FRAMES AND HARDWARE
- FENCING
- STRIPING
- LANDSCAPING
- OVERHEAD DOORS
- CARPET AND RESILIENT FLOORING
- TILE
- ACT
- RESINOUS FLOORING
- CONCRETE POLISHING
- PAINTING
- SPECIALTIES
- SIGNAGE
- LABORATORY EQUIPMENT
- CONTROLLED ENVIRONMENT ROOMS
- FACADE MAINTENANCE
- WINDOW TREATMENTS
- DC/ELF AC SHIELDING
- ELEVATORS
- PAVING
- SITE CONCRETE
- SITE UTILITIES

PROJECT PROCUREMENT OVERVIEW

- **ISSUE RFP: EARLY MAY**
 - **BUILDING CONNECTED**
 - **INSTRUCTIONS TO BIDDERS**
 - **PROJECT PLANS AND SCOPES OF WORK**
 - **BID RFI'S**
 - **BIDS DUE: EARLY JUNE**
- 

PROJECT PROCUREMENT OVERVIEW

- **SQA AND QUALIFICATIONS**

- **DUE WITH BIDS**

- **LINK TO PREQUALIFICATION AND SQA:**

<https://app.buildingconnected.com/public/5579ca47675b720a008b2c5a>

- **EVALUATING & AWARDING CONTRACTS: SUMMER 2021**

- **CONSTRUCTION: FALL 2021**

- **PROJECT DURATION: 2 YEARS**

HOW TO GET INVOLVED

Go to <https://www.LBNLBioEPICconstruction.com/>
for a procurement schedule and list of opportunities

SUBCONTRACTING GOALS ON THE PROJECT



- 1) ALL SB CONCERNS
- 2) SDB
- 3) WOSB
- 4) HUBZONE SB
- 5) SDVOSB
- 6) VOSB

LBNL RESOURCES

Phillip McCants

Acting Small Business Officer and
Supervisor of Business Assurance and
Policy

Lawrence Berkeley National Laboratory



Viki Bamba Chennault

Director, Small Business and Public Affairs

Clark Construction

Email:

Marivic.Chennault@clarkconstruction.com

CLARK SMALL AND DIVERSE BUSINESS INITIATIVES

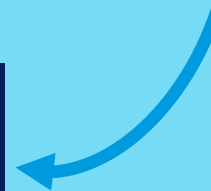
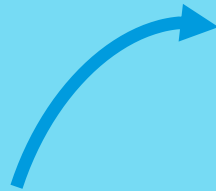
Clark Small & Diverse Business Program

1.
Project Informational
Session with Diverse
Business Enterprise
Community

2.
Meet and Greet with Key
Organization and
Groups

3.
Small Business
Assistance/Training
-Project Website
-Matchmaking Session
-Strategic Partnership Program

4.
Monitoring and Reporting
-Provide Ongoing Reports



▶ VIRTUAL ONE ON ONE SESSIONS WITH MAJOR TRADE PARTNERS FOR THE FOLLOWING SCOPES:

- ▶ HVAC
- ▶ Electrical
- ▶ Plumbing
- ▶ Controls
- ▶ Auger Cast Piles
- ▶ Structural Steel

PLEASE GO TO www.LBNLBioEPICconstruction.com under the “Events and Activities” tab to register for the session.

MATCHMAKING SESSION WITH
MAJOR TRADE PARTNERS

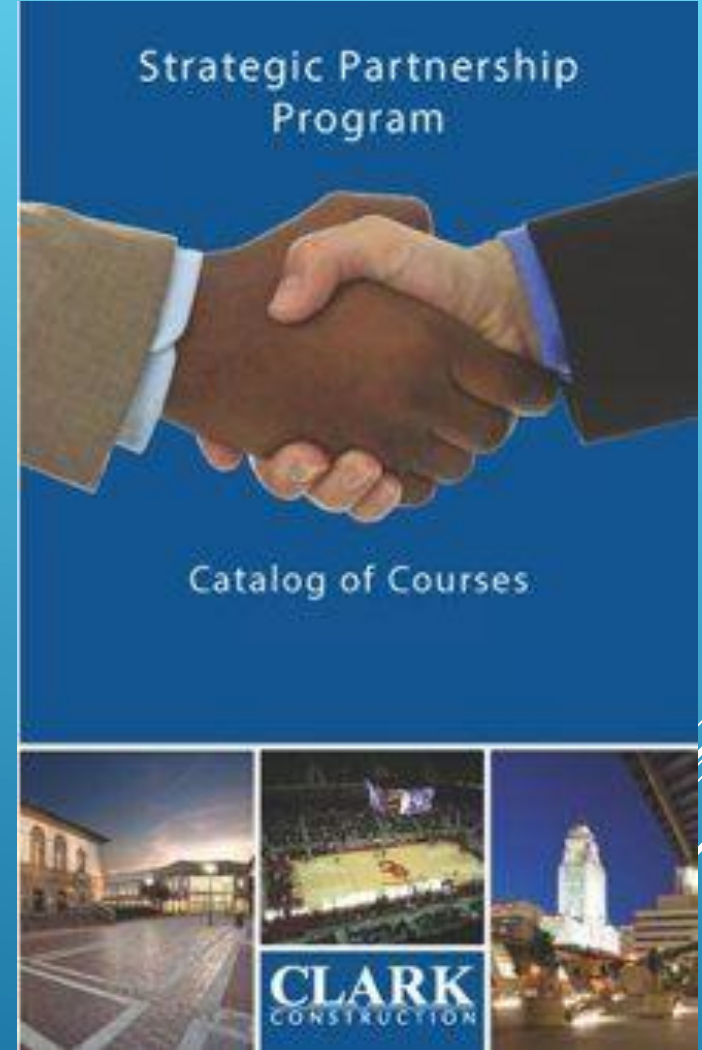


Informational and Matchmaking Sessions



PROGRAM OVERVIEW

- ❑ Program started in 2006 and Launched in Northern CA in 2014
- ❑ 8 Month MBA Style Training Program
 - ❑ Free of Charge
 - ❑ Classes begin in September and end in May
 - ❑ Recruitment starts in June
 - ❑ 3 hour Tuesday evening Class - One Weeknight a Week Taught by Clark Personnel
 - ❑ Estimating, Purchasing, Project Management, Accounting, Construction Claims, Bonding, BIM, Building Information Modeling, Bluebeam, Presentation Skills etc.
 - ❑ Monthly Lunch and Learn Sessions with Industry Experts
 - ❑ For more info:
<https://www.clarkconstruction.com/spp>



Strategic Partnership Program - Bethesda, Baltimore, Northern CA, Southern CA, Chicago, Boston and Seattle



SINCE 2006, OVER 900 GRADUATES AND OVER \$1 BILLION AWARDED TO GRADUATES. IN NORTHERN CA, 88 GRADUATES AND ALMOST \$47 MILLION AWARDED TO GRADUATES.



Q & A SESSION